




# California Strategic Growth Council

*Healthy, thriving, and resilient communities for all*

SoCalRen Advisory Committee Meeting

July 14, 2021



CALIFORNIA  
STRATEGIC  
GROWTH  
COUNCIL



# Our Vision

Healthy, thriving, and resilient communities for all

# Our Mission

The mission of the Council is to coordinate and work collaboratively with public agencies, communities, and stakeholders to achieve sustainability, equity, economic prosperity, and quality of life for all Californians

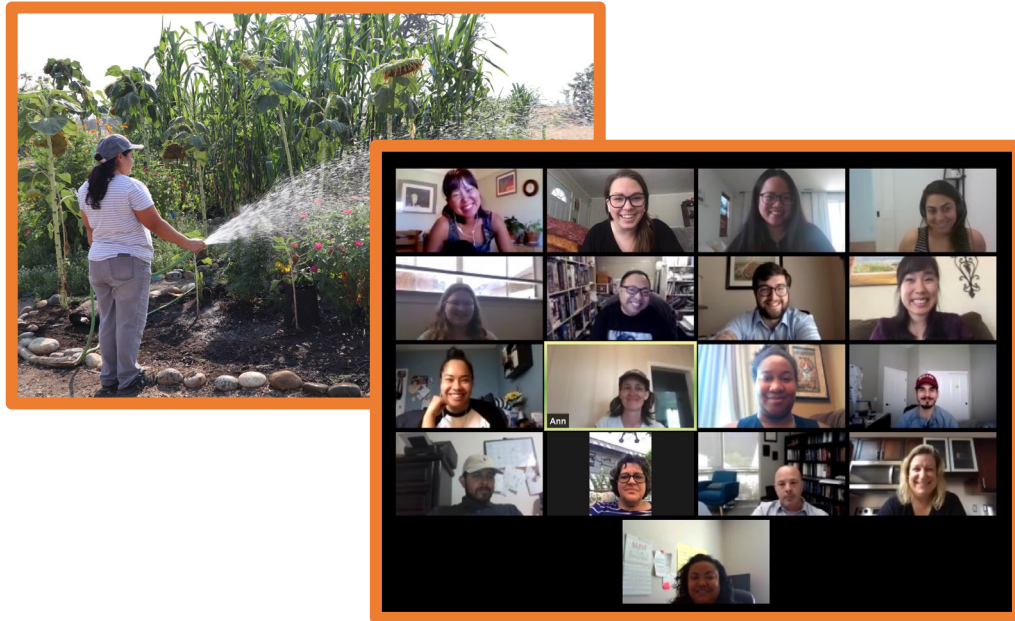


CALIFORNIA  
STRATEGIC  
GROWTH  
COUNCIL



# How We Work: Our Approach

Five key themes guide SGC's investments, programs, and initiatives:



A blue-toned illustration of a cityscape at the top of the page, featuring various buildings, trees, and people riding bicycles.

# What We Do: Programs and Initiatives

A solid orange horizontal bar separating the header from the main content area.

CALIFORNIA  
STRATEGIC  
GROWTH  
COUNCIL

A blue-toned illustration of a rural landscape at the bottom of the page, featuring houses, trees, a tractor, a barn, and silos.

# What We Do: Programs and Initiatives

SGC's work falls under four main categories.



**Investment Programs**



**Collaborative Policy Initiatives**



**Integrated Policy and Planning**



**Capacity Building and Technical Assistance**





# Investment Programs



CALIFORNIA  
STRATEGIC  
GROWTH  
COUNCIL

# Affordable Housing and Sustainable Communities (AHSC)

*Integrates affordable housing and sustainable transportation* to make sure housing, jobs, and key destinations are accessible by walking, biking, and transit.

AHSC HAS AWARDED

**\$1,655,972,480**

THROUGH 5 ROUNDS OF FUNDING



**NEARLY 83%**

OF AHSC'S ROUND 5 INVESTMENTS BENEFIT  
**DISADVANTAGED** AND/OR  
**LOW-INCOME COMMUNITIES**



CALIFORNIA  
STRATEGIC  
GROWTH  
COUNCIL

# Transformative Climate Communities (TCC)

*Community-led transformation to enable* the California communities most impacted by pollution to choose their own goals, strategies and projects to reduce greenhouse gas emissions and local air pollution.

**Total Investments: \$229.2 million**



**\$48,715,384**

AWARDED IN

**DISADVANTAGED  
COMMUNITIES**

IN 2019-2020



CALIFORNIA  
STRATEGIC  
GROWTH  
COUNCIL



# Energy Efficiency Eligible Projects (AHSC)

- Renewable Energy
- ZEV Charging Infrastructure
- Water Efficiency
- Urban Greening



# Energy Efficiency Eligible Projects (TCC)

- Multi-family Solar
- Single-family Solar
- Low Income Weatherization
- Water Efficiency
- Waste Management
- Urban Greening



# Climate Change Research (CCR)

*Cross-cutting, community-engaged research investments that build community resilience, integrate land use and development considerations, and facilitate the transformation of California communities.*

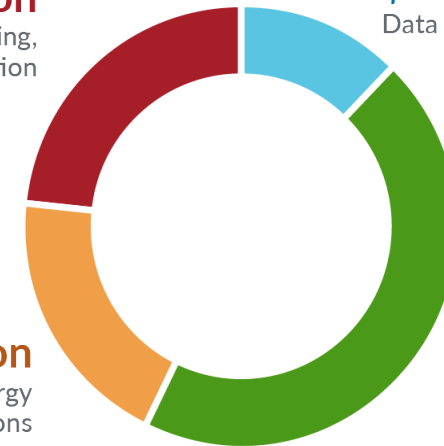
**Total Investments: \$32.45 million**



TOPICS FUNDED THROUGH THREE ROUNDS OF THE CLIMATE CHANGE RESEARCH PROGRAM

**\$7.57 million**  
Land Use, Housing,  
and Transportation

**\$4.0 million**  
Data and tools for planning



**\$6.28 million**  
Equitable Energy  
Transitions

**\$14.6 million**  
Natural and  
Working Lands

**\$4.75 MILLION**  
AWARDED TO  
**6 PARTNERSHIP-BASED  
RESEARCH PROJECTS**  
IN 2019-2020



CALIFORNIA  
STRATEGIC  
GROWTH  
COUNCIL

Health and Equity Program (HEP)

# Health in All Policies Task Force (HiAP)

*Advances a collaborative, interagency approach to embed health, equity, and sustainability* into decision-making processes that affect the future of California.

- California Farm-to-Fork Office formation
- Infusing health and equity goals into Caltrans planning
- Guidelines improving the nutritional value of meals served in government facilities across the state
- Published: *Guide for State and Local Governments*
- Increasing park access



HIAP HAS PROVIDED HEALTH AND EQUITY GUIDANCE TO

**\$2.9 BILLION**  
OF STATE FUNDED GRANTS

IMPACTING OVER

**350 COMMUNITIES**

IN

**49 COUNTIES**



CALIFORNIA  
STRATEGIC  
GROWTH  
COUNCIL

Integrated Policy and Planning

# High-Speed Rail Station Area Planning

*Through its partnership with the California High-Speed Rail Authority (HSRA),* SGC helps advance policies and practices to achieve sustainable, equitable community development outcomes in planned HSR station communities, as well as in communities affected by HSR construction.



CALIFORNIA  
High-Speed Rail Authority



CALIFORNIA  
STRATEGIC  
GROWTH  
COUNCIL



# Questions?



CALIFORNIA  
STRATEGIC  
GROWTH  
COUNCIL



A blue-toned illustration of a cityscape at the top of the page, featuring various buildings, trees, and people on bicycles.

# Saharnaz Mirzazad

Deputy Director, Community Investment and Planning

[saharnaz.mirzazad@sgc.ca.gov](mailto:saharnaz.mirzazad@sgc.ca.gov)



CALIFORNIA  
STRATEGIC  
GROWTH  
COUNCIL

A blue-toned illustration of a rural landscape at the bottom of the page, featuring houses, trees, a tractor, and silos.